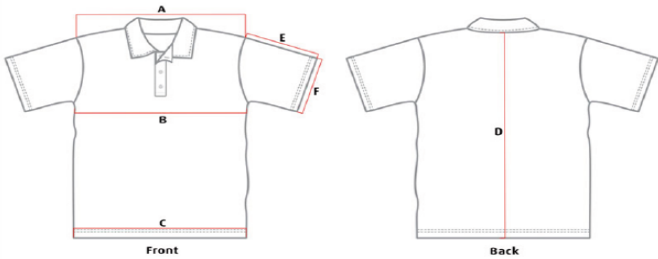


# New Tuna Club of Tasmania Fishing Apparel

Micromesh Shirts in both long and short sleeve \$50

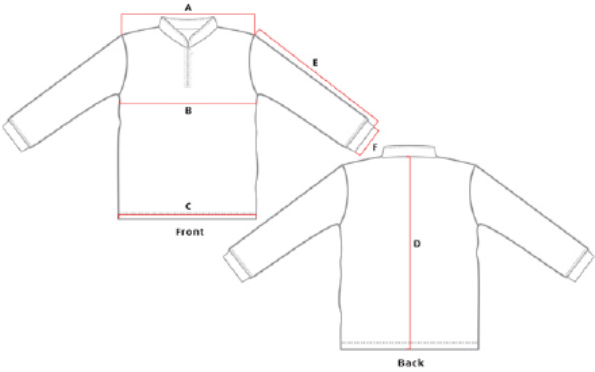


## Sizing Chart Micromesh Shirts



Measurements in cms	XS	S	M	L	XL	2XL	3XL	4XL	5XL
A. SHOULDER	48	50	52	54	56	58	60	62	64
B. HALF CHEST	51	53	56	58	61	65	69	73	77
C. HALF HEM	50	52	55	57	60	64	68	72	78
D. CENTRE BACK	68	70	73	75	78	82	86	89	93
E. SLEEVE LENGTH	22	23	24	25	26	27	29	30	31
F. SLEEVE OPENING HALF	18	18	19	19	20	20	21	21	22

Tolerance +/- 1.0 cms



Measurements in 1.0 cm	XS	S	M	L	XL	2XL	3XL	4XL	5XL
B. HALF CHEST	51.0	53.0	56.0	58.0	61.0	65.0	69.0	73.0	77.0
D. CENTRE BACK	68.0	70.0	73.0	75.0	78.0	82.0	86.0	89.0	93.0

Tolerance +/- 1.0 cm

## Navy Blue Soft Shell Jacket \$70

---



ADULTS	S	M	L	XL	2XL	3XL	4XL	5XL
CHEST	56	58.5	61	63.5	66	68.5	71.5	74.5
CB LENGTH	72	74	76	78	80	82	83	84

## Navy Blue Hoody \$45



ADULTS	S	M	L	XL	2XL	3XL	4XL	5XL
CHEST	57.5	60	62.5	65	67.5	70	72.5	75
SPL LENGTH	72	74	76	78	80	82	83	84